

HOME of the MONTH January 2012

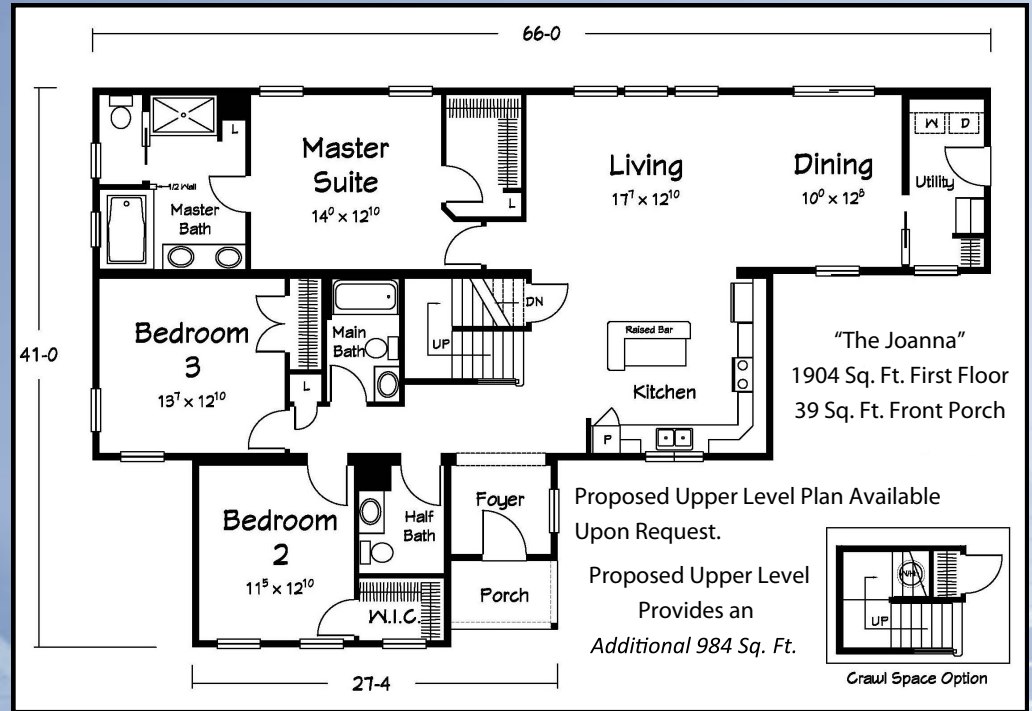


Built Using Classic Specs

INTERIOR PACKAGED FEATURES:

- 9' Ceilings Throughout (8'-6" Where Applicable)
- Staggered Alpine Maple Kitchen Cabinets
- 12"x12" Snapstone Ceramic Floor in Master Bath
- Nafco Vinyl Flooring in Kitchen, Hall, Main Bath and Utility
- Laminate Plank Flooring in Foyer
- 25oz. Carpet in Living, Dining, and All Bedrooms
- Vinyl in Half Bath
- Extended Refrigerator Cabinet with Wine Rack

The Joanna



EXTERIOR PACKAGED FEATURES:

- 12/12 Roof with Shingle Eave Returns on Front Door Side
- Cape Dormer with Shed Roof and Twin Windows
- 6-Over-6 Window Grids
- Vinyl Board & Batten Siding in Large Front Dormer and Around Kitchen Window
- Vinyl Cedar Shake Siding on Small Front Dormer and Cape Dormer
- Decorative Rectangle Vent
- 5/4" PT Porch Decking with PT Floor Joists
- One 4"x4" Wrapped Porch Post (Railing Not Included)
- 8 Pairs of Louvered Shutters on Front Door Side
- 20310 Muller Window Over Kitchen Sink



Stone Accent Completed OnSite By Others.

