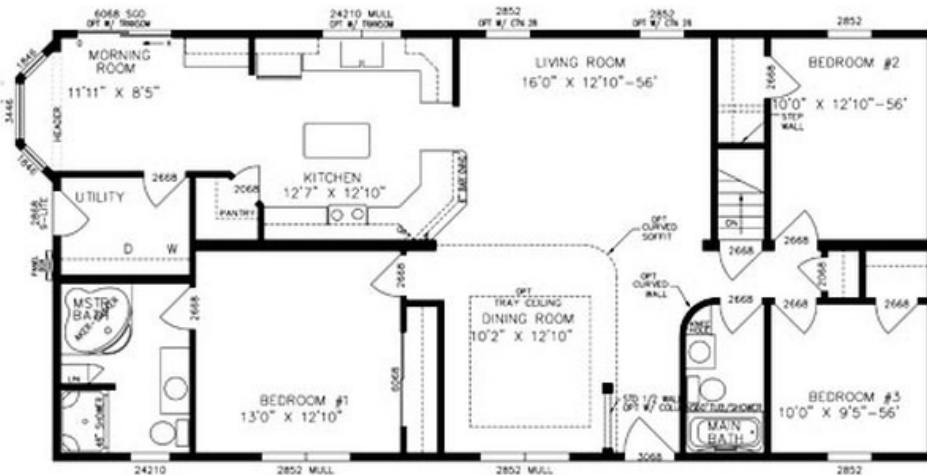


Bristol



BRISTOL I
 PLAN NO: MR2733
 27'4" x 56'0"
 1530 SQ. FT.

BRISTOL II
 PLAN NO: MR2734
 27'4" x 60'0"
 1640 SQ. FT.

BRISTOL III
 PLAN NO: RW3200
 31'4" x 56'0"
 1754 SQ. FT.

BRISTOL IV
 PLAN NO: RW3201
 31'4" x 60'0"
 1880 SQ. FT.

